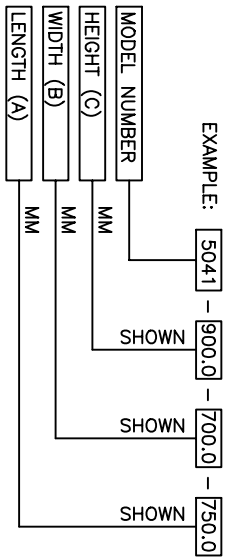


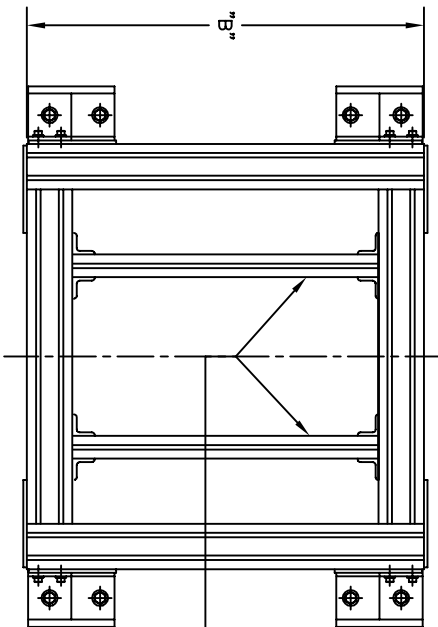
METRIC BASE UNITS

<u>MODEL #</u>	<u>SHEET #</u>	<u>DESCRIPTION</u>
5041	B40-1	METRIC 8080 BASE FRAME
5264	B40-2	METRIC 3060 BASE FRAME
5273	B40-3	METRIC 4080 BASE FRAME

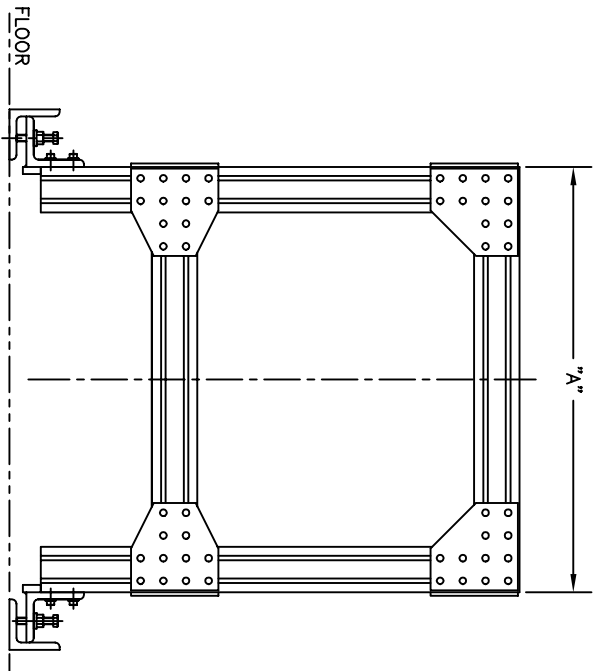
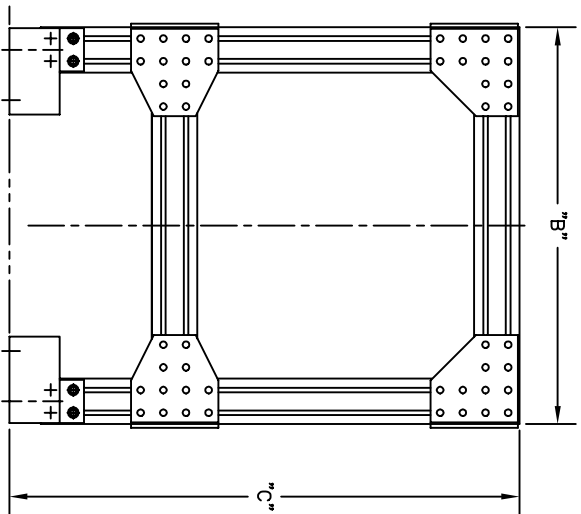
HOW TO ORDER DIAMOND AUTOMATION  
METRIC 8080 BASE FRAME



5041S FOR STD  
5041L FOR LIFTER  
5041R FOR ROTATE  
5041T FOR TIP



OPTIONAL CROSS TUBES TO MOUNT LIFTERS,  
TIPS, ROTATES, ETC. NOT INCLUDED  
WITH STANDARD FRAME



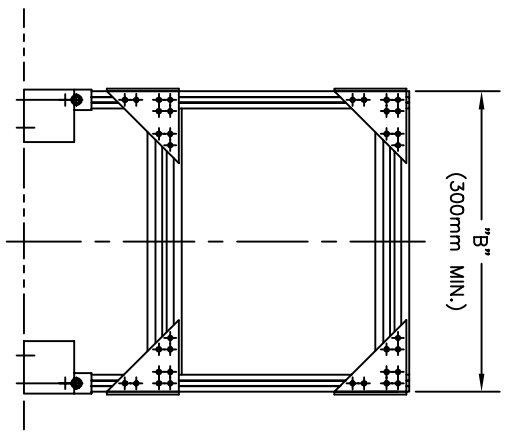
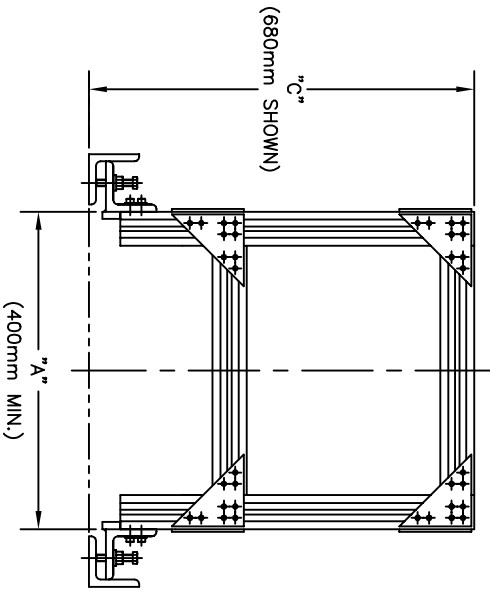
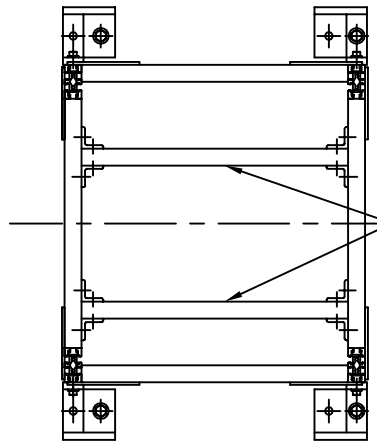
5096 1/2 CANAL ROAD  
P.O. BOX 37  
DIMONDALE MICHIGAN 48821  
PHONE (517) 646-9637  
FAX (517) 646-8115  
WWW.DIAMONTS.COM  
E-MAIL: INFO@DIAMONTS.COM



TITLE METRIC 8080 BASE FRAME  
MODEL #5041

DRAWN BY R/G DATE 10/15/02 SHEET BA0-1

OPTIONAL CROSS TUBES TO MOUNT LIFTERS,  
TIPS, ROTATES, ETC. NOT INCLUDED  
WITH STANDARD FRAME



HOW TO ORDER DIAMOND AUTOMATION  
METRIC 3060 BASE FRAME

EXAMPLE: 5264S - 680.0 - 530.0 - 560.0

MODEL NUMBER	MM	SHOWN	SHOWN	SHOWN
"C" HEIGHT	MM			
"B" WIDTH	MM			
"A" LENGTH	MM			

5264S FOR STANDARD  
5264L FOR LIFTER  
5264R FOR ROTATE  
5264T FOR TIP

5096 1/2 CANAL ROAD  
P.O. BOX 37  
DIMONDALE MICHIGAN 48821  
PHONE (517) 646-9637  
FAX (517) 646-8115  
WWW.DIAMSYS.COM  
E-MAIL: INFO@DIAMSYS.COM

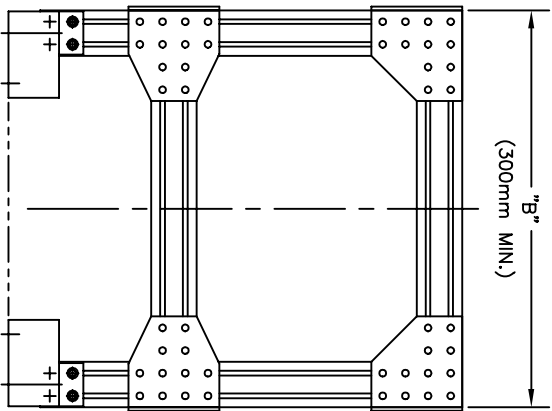
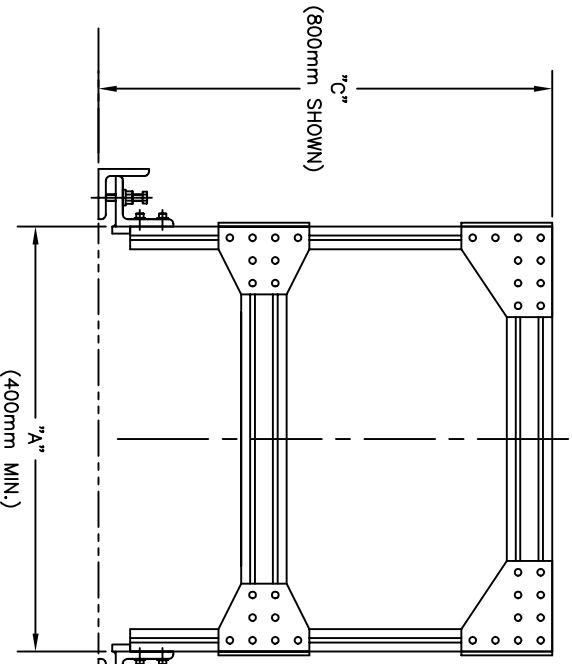
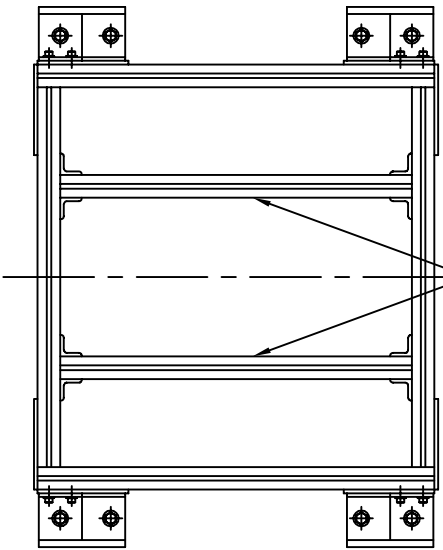
**DIAMOND AUTOMATION, LTD.**  
CONTACT CONVEYOR SYSTEMS

TITLE METRIC 3060 BASE FRAME  
MODEL #5264

DRAWN BY MS DATE 02/25/04 SHEET BA0-2

LAST PRINT DATE: 07/25/05

OPTIONAL CROSS TUBES TO MOUNT LIFTERS,  
TIPS, ROTATES, ETC. NOT INCLUDED  
WITH STANDARD FRAME



HOW TO ORDER DIAMOND AUTOMATION  
METRIC 4080 BASE FRAME

MODEL NUMBER	MM	SHOWN	5273S	-	800.0	-	700.0	-	750.0
"C" HEIGHT	MM	SHOWN							
"B" WIDTH	MM	SHOWN							
"A" LENGTH	MM	SHOWN							

5264S FOR STANDARD  
5264L FOR LIFTER  
5264R FOR ROTATE  
5264T FOR TIP

5096 1/2 CANAL ROAD  
P.O. BOX 37  
DIMONDALE MICHIGAN 48821  
PHONE (517) 646-9637  
FAX (517) 646-8115  
WWW.DIAMONTS.COM  
E-MAIL: INFO@DIAMONTS.COM



TITLE METRIC 4080 BASE FRAME  
MODEL #5273

DRAWN BY M/S DATE 02/25/02 SHEET B40-3

LAST PRINT DATE: 07/25/05