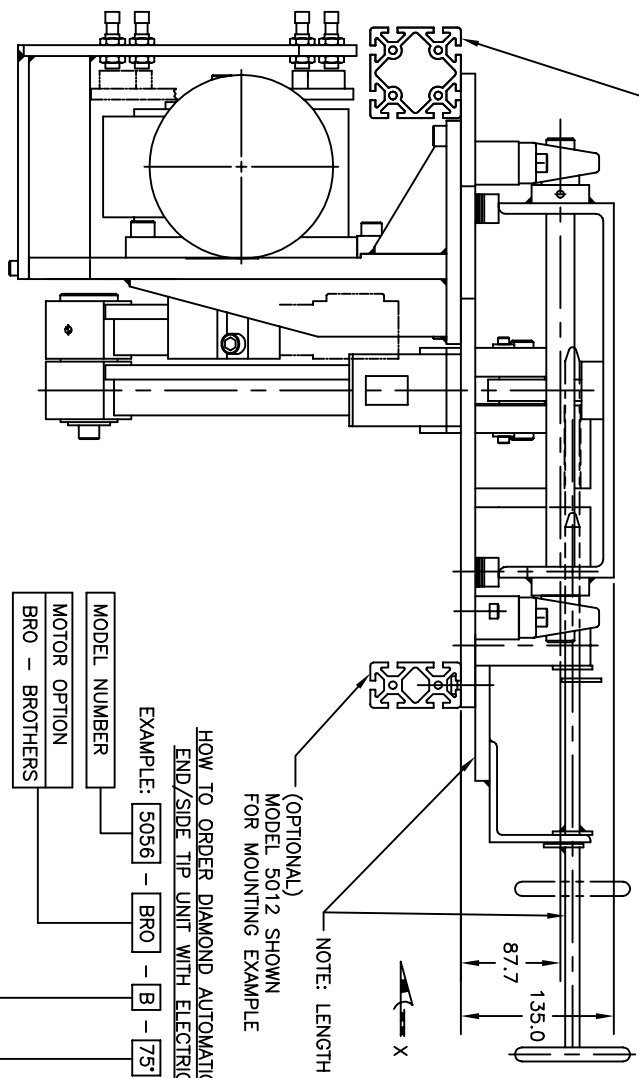
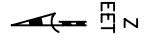


METRIC TIP UNITS

<u>MODEL #</u>	<u>SHEET #</u>	<u>DESCRIPTION</u>
5056 :	T-1 :	75° TIP WITH ELECTRIC MOTOR
5056 :	T-2 :	90° TIP WITH ELECTRIC MOTOR
5048 :	T-3 :	END/SIDE TIP WITHOUT LOCKING CYLINDER
5048 :	T-4 :	END/SIDE TIP WITHOUT LOCKING CYLINDER
5006 :	T-5 :	END/SIDE TIP WITH ROD LOCK
5006 :	T-6 :	END/SIDE TIP WITH ROD LOCK

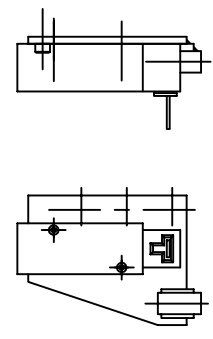
(OPTIONAL)
MODEL 5013 SHOWN
FOR MOUNTING EXAMPLE

(SEE SHEET #T-2)



NOTE: REMOVE MOUNT SWITCH
OUTSIDE OF MACHINE GUARDING.

OPTIONAL LOCK-OUT SWITCH



(OPTIONAL)
MODEL 5012 SHOWN
FOR MOUNTING EXAMPLE

HOW TO ORDER DIAMOND AUTOMATION METRIC
END/SIDE TIP UNIT WITH ELECTRIC MOTOR
EXAMPLE: [5056] - [BRO] - [B] - [75°] - [L]

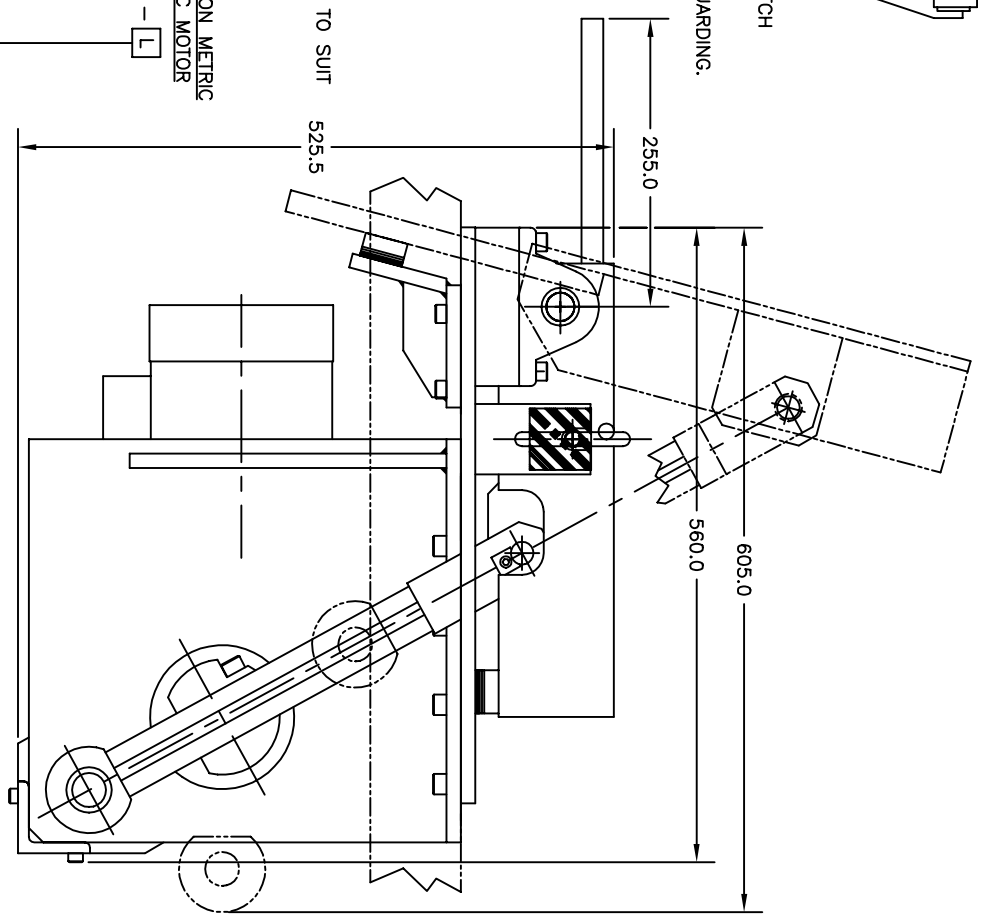
- MODEL NUMBER
- MOTOR OPTION
- BRO - BROTHERS

- TIP STYLE
- A - SIDE TIP
- B - END TIP
- PIVOT ANGLE

- OPTIONAL LOCK-OUT SWITCH
- L - WITH LOCKOUT SWITCH
- O - WITHOUT LOCKOUT SWITCH

(FROM THIS SHEET)
75° TIP WITH ELECTRIC MOTOR
(SEE SHT. #T-2 FOR 90° ANGLE)

VIEW X



TECHNICAL DATA
DESIGN TIPS:
FOR BEST OPERATION, KEEP THE CENTER OF
MASS BEING TIPPED AS CLOSE TO THE
PIVOT POINT AS POSSIBLE.
MID-DRIVE CONVEYORS ARE RECOMMENDED.

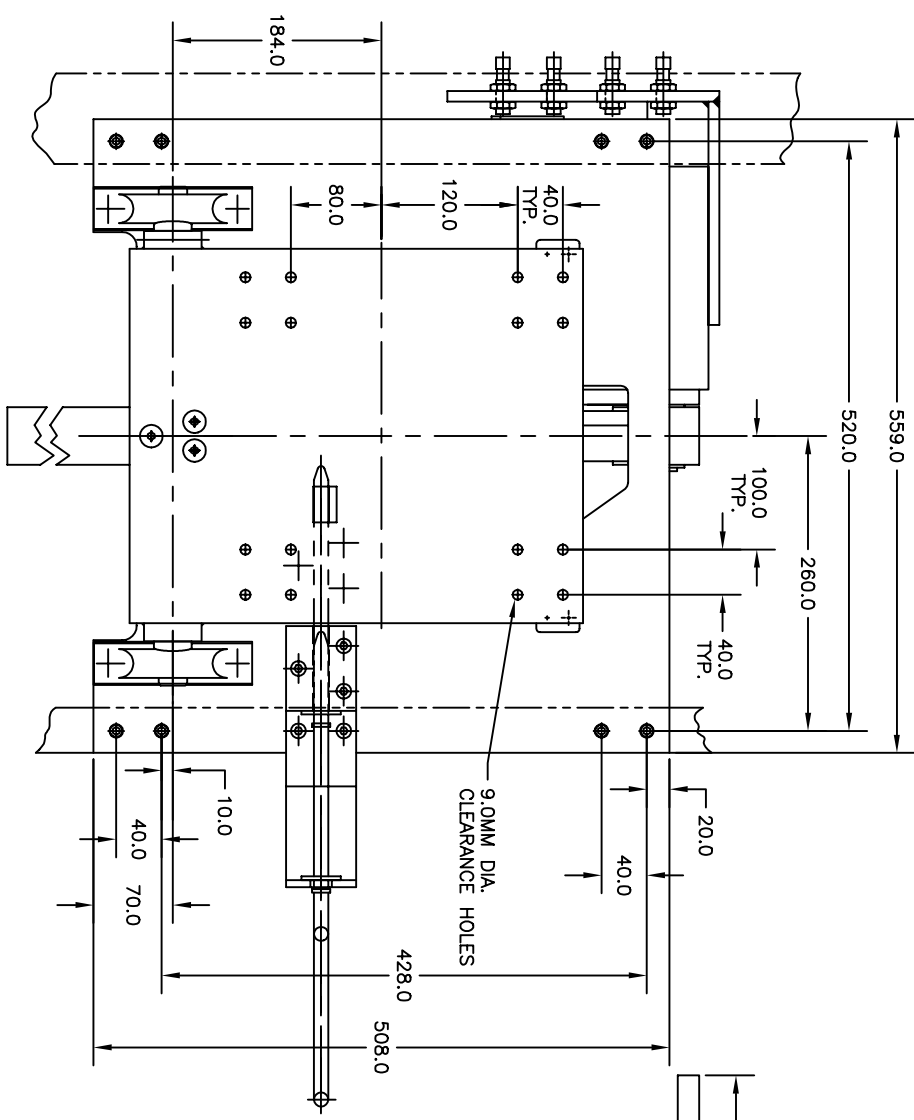
5096 1/2 CANAL ROAD
P.O. BOX 37
DIMONDALE MICHIGAN 48821
PHONE (517) 646-9637
FAX (517) 646-8115
WWW.DIAMTS.COM
E-MAIL: INFO@DIAMTS.COM

DIAMOND AUTOMATION, LTD.
COMPACT CONVEYOR SYSTEMS

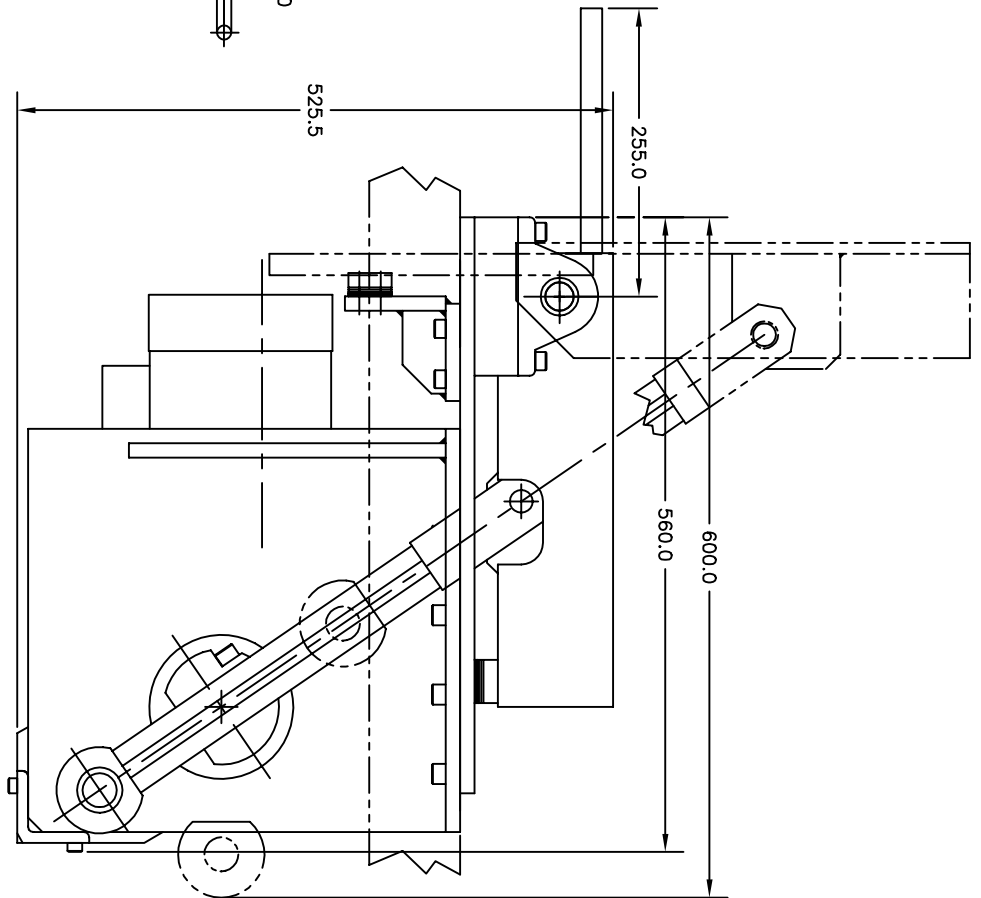
TITLE: METRIC END/SIDE TIP UNIT
75° WITH ELECTRIC MOTOR
MODEL #5056

Drawn by AAF [DATE] 5/22/98 SHEET T-1

SEE SHEET #T-1 FOR ORDERING INFORMATION




VIEW Z
(FROM SHIT. #T-1)

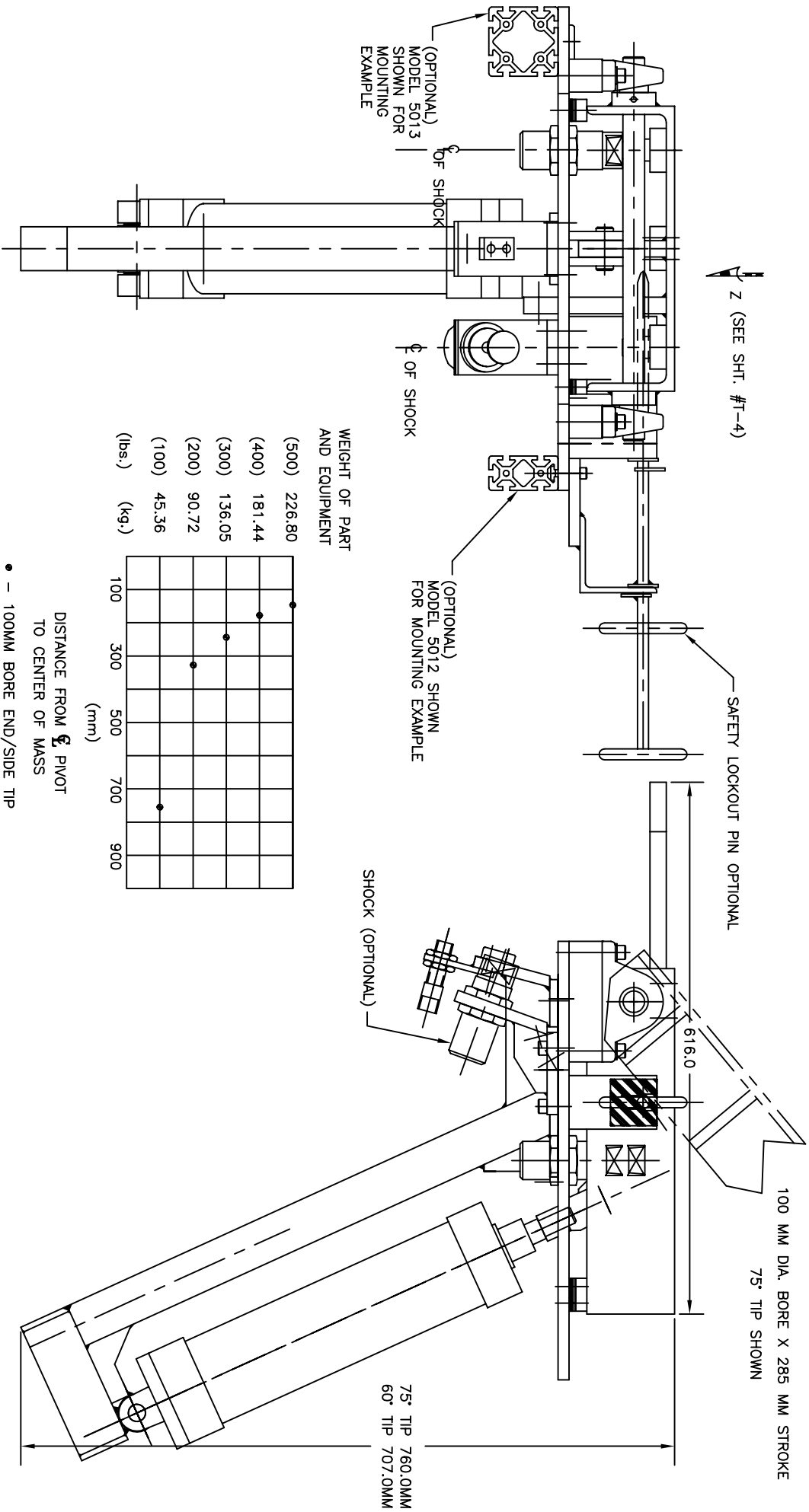


VIEW X
(FROM SHIT. #T-1)
90° TIP WITH ELECTRIC MOTOR
(SEE SHIT. #T-1 FOR 75° ANGLE OPTION)

5096 1/2 CANAL ROAD
P.O. BOX 37
DIMONDALE MICHIGAN 48821
PHONE (517) 646-9637
FAX (517) 646-8115
WWW.DIAMSYS.COM
E-MAIL: INFO@DIAMSYS.COM

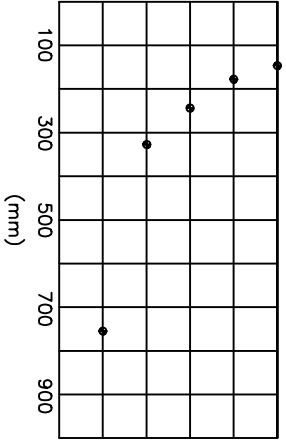
 DIAMOND AUTOMATION, LTD. CONTACT CONVERTOR SYSTEMS	
TITLE	METRIC END/SIDE TIP UNIT WITH ELECTRIC MOTOR MODEL #5056
DRAWN BY	A.F.
DATE	5/22/98
SHEET	T-2

LAST PRINT DATE: 01/04/06



WEIGHT OF PART AND EQUIPMENT

(500)	226.80
(400)	181.44
(300)	136.05
(200)	90.72
(100)	45.36
(lbs.)	(kg.)



- - 100MM BORE END/SIDE TIP
- 75° = 3.0 SECONDS AT 60 PSI

(SEE SHIT. #T-4 FOR ORDERING INFORMATION)

TECHNICAL DATA

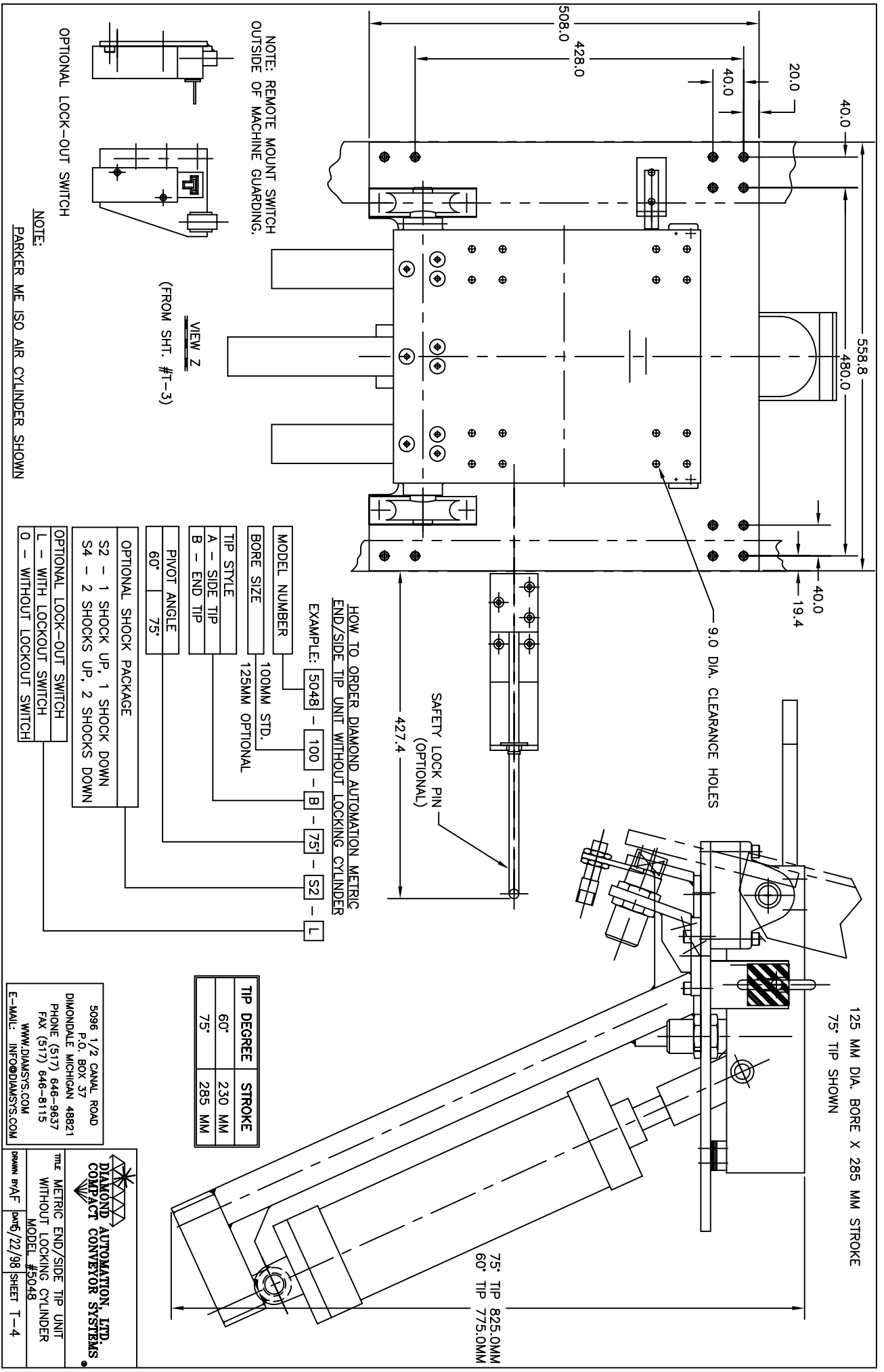
DESIGN TIPS:
 FOR BEST OPERATION, KEEP THE CENTER OF MASS BEING TIPPED, AS CLOSE TO THE PIVOT POINT AS POSSIBLE.
 MID-DRIVE CONVEYORS ARE RECOMMENDED. THE USE OF SHOCK ABSORBERS IS ADVISED, DIAMOND AUTOMATION OFFERS A SHOCK ABSORBER OPTION FOR USE WITH MODEL #5006.

5096 1/2 CANAL ROAD
 P.O. BOX 37
 DIMONDALE MICHIGAN 48821
 PHONE (517) 646-9637
 FAX (517) 646-8115
 WWW.DIAMONTS.COM
 E-MAIL: INFO@DIAMONTS.COM

DIAMOND AUTOMATION, LTD.
 COMPACT CONVEYOR SYSTEMS

TITLE: METRIC END/SIDE TIP UNIT WITHOUT LOCKING CYLINDER
 MODEL #5048

DRWING BY: A.F. [DATE: 01/22/98] SHEET T-3



NOTE: REMOTE MOUNT SWITCH OUTSIDE OF MACHINE GUARDING.

VIEW Z
(FROM SHIT. #T-3)

NOTE:
PARKER ME ISO AIR CYLINDER SHOWN

HOW TO ORDER DIAMOND AUTOMATION METRIC END/SIDE TIP UNIT WITHOUT LOCKING CYLINDER
EXAMPLE: 5048 - 100 - B - 75° - S2 - L

MODEL NUMBER	100MM STD.
BORE SIZE	125MM OPTIONAL
TIP STYLE	A - SIDE TIP
	B - END TIP
PIVOT ANGLE	60°
	75°
OPTIONAL SHOCK PACKAGE	
	S2 - 1 SHOCK UP, 1 SHOCK DOWN
	S4 - 2 SHOCKS UP, 2 SHOCKS DOWN
OPTIONAL LOCK-OUT SWITCH	
	L - WITH LOCKOUT SWITCH
	0 - WITHOUT LOCKOUT SWITCH

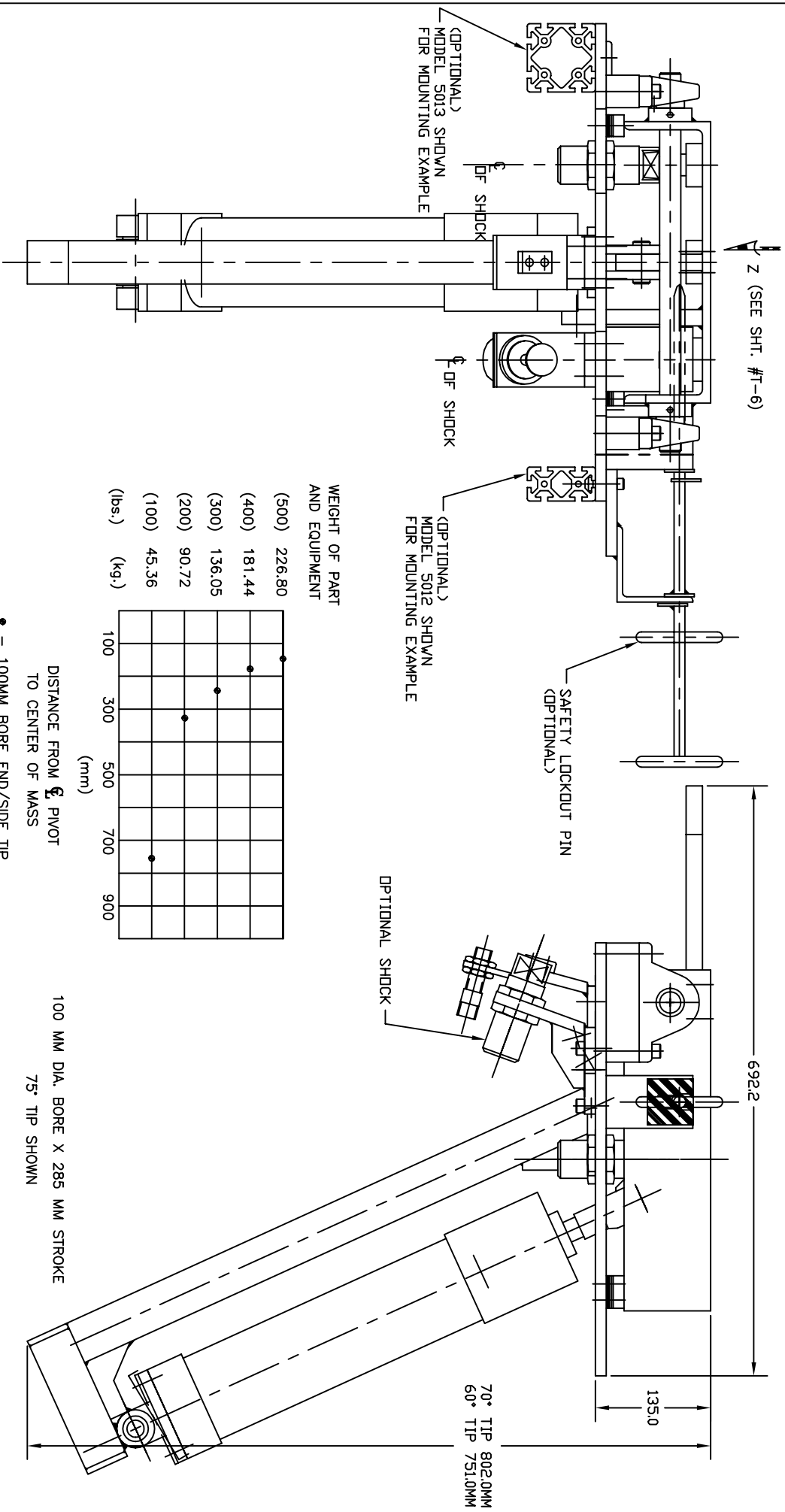
TIP DEGREE	STROKE
60°	230 MM
75°	285 MM

5096 1/2 CANAL ROAD
P.O. BOX 37
DIMONDALE MICHIGAN 48821
PHONE (517) 646-9637
FAX (517) 646-8115
WWW.DIAMSYS.COM
E-MAIL: INFO@DIAMSYS.COM

DIAMOND AUTOMATION, LTD.
CONTACT CONVERTOR SYSTEMS

TITLE: METRIC END/SIDE TIP UNIT WITHOUT LOCKING CYLINDER
MODEL #5048
DRAWN BY: A-F DATE: 6/22/98 SHEET T-4

LAST PRINT DATE: 01/04/06



DESIGN TIPS:
FOR BEST OPERATION, KEEP THE CENTER OF MASS BEING TIPPED, AS CLOSE TO THE PIVOT POINT AS POSSIBLE.
MID-DRIVE CONVEYORS ARE RECOMMENDED. THE USE OF SHOCK ABSORBERS IS ADVISED. DIAMOND AUTOMATION OFFERS A SHOCK ABSORBER OPTION FOR USE WITH MODEL #5006.

TECHNICAL DATA

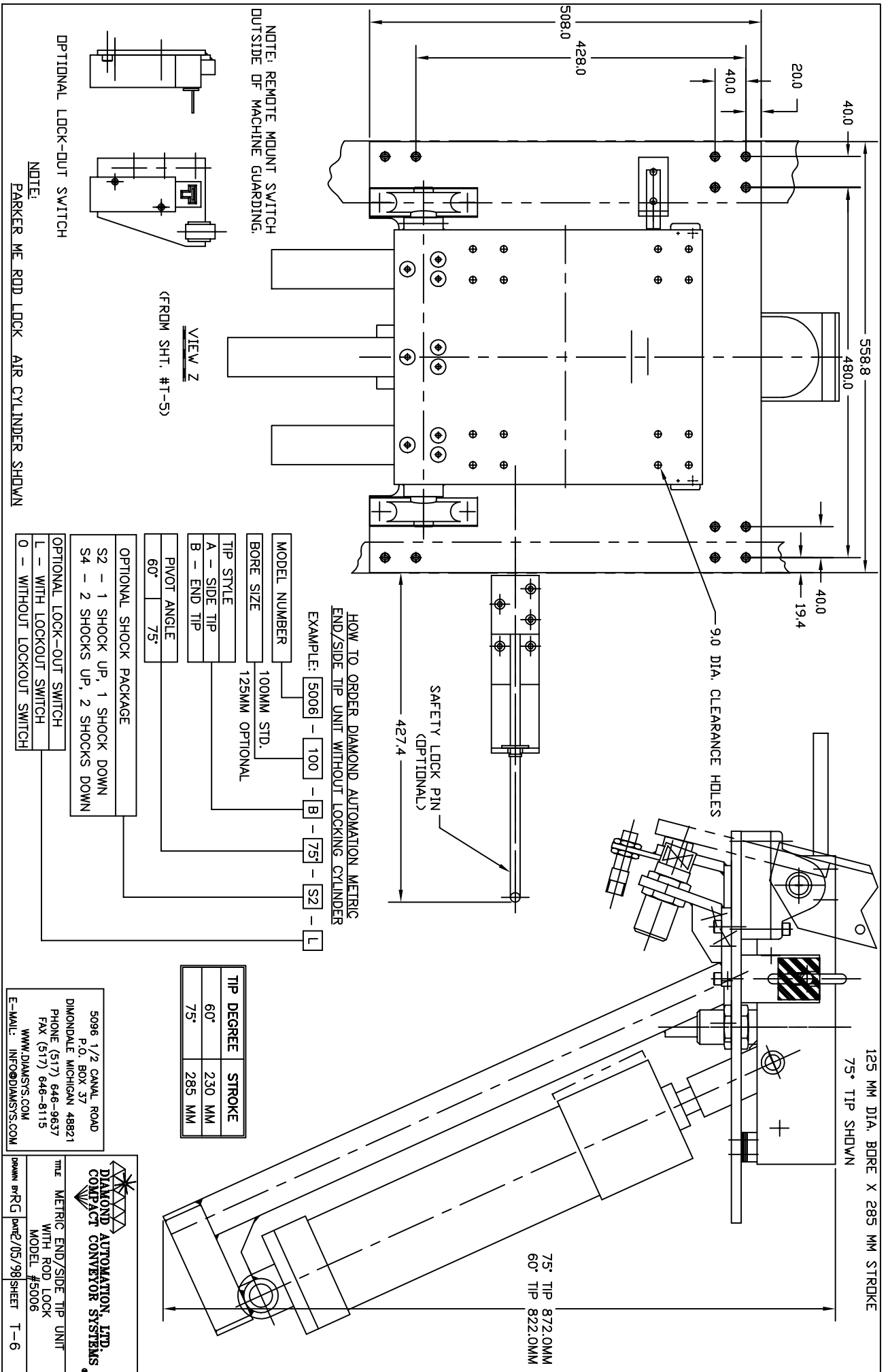
(SEE SHT. #T-6 FOR ORDERING INFORMATION)

5096 1/2 CANAL ROAD
P.O. BOX 37
DIMONDALE MICHIGAN 48821
PHONE (517) 646-9637
FAX (517) 646-8115
WWW.DIAMONTS.COM
E-MAIL: INFO@DIAMONTS.COM

DIAMOND AUTOMATION, LTD.
COMPACT CONVEYOR SYSTEMS

TITLE METRIC END/SIDE TIP UNIT
WITH ROD LOCK
MODEL #5006

DRWNN BR R/G DATE 05/98 SHEET T-5



NOTE: REMOVE MOUNT SWITCH OUTSIDE OF MACHINE GUARDING.

VIEW Z
(FROM SHIT. #1-5)

OPTIONAL LOCK-OUT SWITCH

NOTE:
PARKER ME ROD LOCK AIR CYLINDER SHOWN

HOW TO ORDER DIAMOND AUTOMATION METRIC END/SIDE TIP UNIT WITHOUT LOCKING CYLINDER

EXAMPLE: [5006] - [100] - [B] - [75] - [S2] - [L]

- MODEL NUMBER: 100MM STD. / 125MM OPTIONAL
- BORE SIZE: 100MM STD. / 125MM OPTIONAL
- TIP STYLE: A - SIDE TIP / B - END TIP
- PIVOT ANGLE: 60° / 75°
- OPTIONAL SHOCK PACKAGE: S2 - 1 SHOCK UP, 1 SHOCK DOWN / S4 - 2 SHOCKS UP, 2 SHOCKS DOWN
- OPTIONAL LOCK-OUT SWITCH: L - WITH LOCKOUT SWITCH / 0 - WITHOUT LOCKOUT SWITCH

TIP DEGREE	STROKE
60°	230 MM
75°	285 MM

5096 1/2 CANAL ROAD
P.O. BOX 37
DIMONDALE MICHIGAN 48821
PHONE (517) 646-9637
FAX (517) 646-8115
WWW.DIAMSYS.COM
E-MAIL: INFO@DIAMSYS.COM

DIAMOND AUTOMATION, LTD.
CONTACT CONNECTOR SYSTEMS

TITLE: METRIC END/SIDE TIP UNIT WITH ROD LOCK
MODEL #5006

DATE: 05/98 SHEET T-6

LAST PRINT DATE: 01/04/06